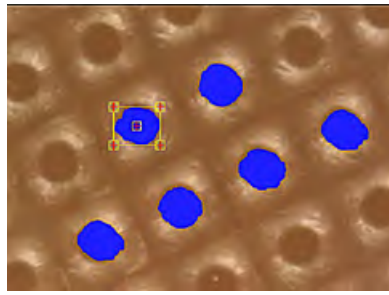
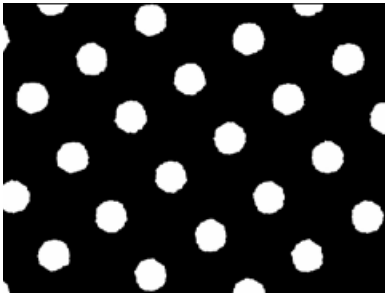




# Plate-2-Print HD

PERFECT QUALITY CONTROL AT BOTH STAGES OF A FLEXO PRINT PRODUCTION



**MASKS  
PLATES  
PRINTED COPY**

Quality Control Systems



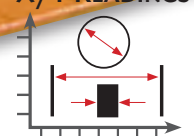
PERCENTAGE



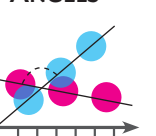
SCREEN COUNT



X/Y READINGS



ANGLES



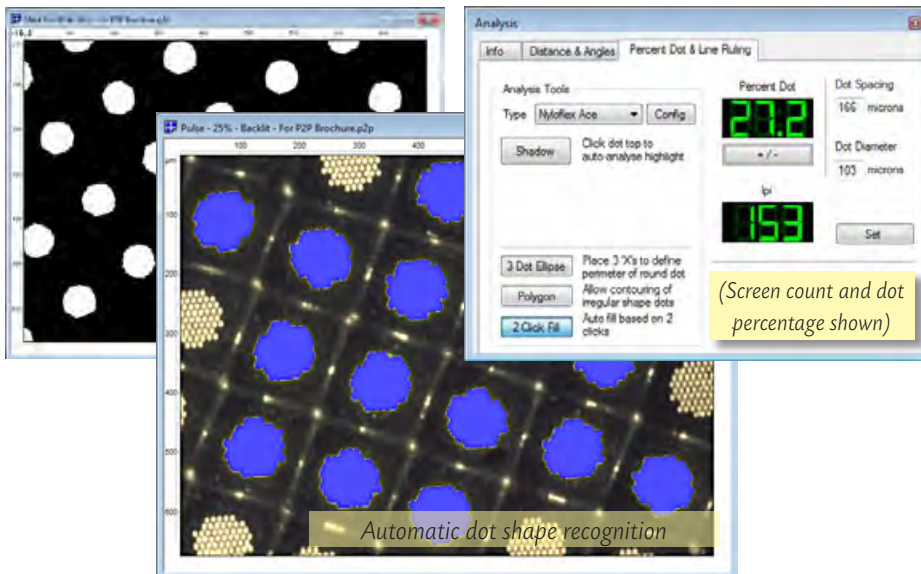


## FEATURES OF FLEXO PLATE-2-PRINT HD

- ▶ Light weight: Compact and robust
- ▶ Easy positioning and use
- ▶ Portable
- ▶ Intuitive functionality
- ▶ Powered by USB2
- ▶ Long USB2 lead for ease of placement
- ▶ Multiple focus: Optical and Digital Zoom
- ▶ Easy calibration

With **FLEXO PLATE-2-PRINT HD**, dot measurement has never been so fast and accurate. Visually see and measure dot sizes on masks, printing plates and the printing department. Never has there been so much power packed into a handheld device.

## MASK AND PLATE READING APPLICATIONS

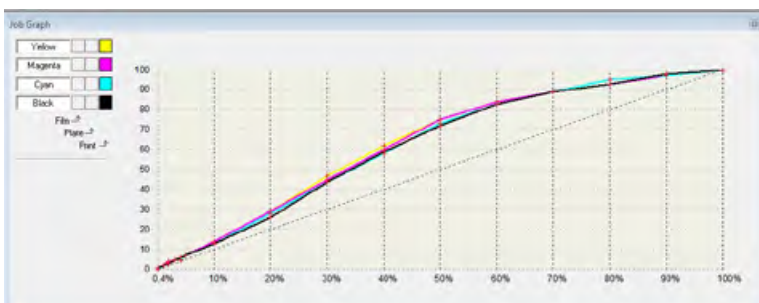


**Catch plate problems before they reach the press with reliable mask/ plate inspections.**

- ▶ Analog and digital measurement
- ▶ Setups for accurate digital measurement
- ▶ Reflective and translucent readings
- ▶ Measures thin and thick plates
- ▶ Individual Setup per plate type for optimal measurements
- ▶ Proven on over 40 flexo plate materials.

## GRAPHICAL VIEWS AND COMPARISONS

Reading values can be analysed in a graphical representation - allowing you to directly compare dot percentages on Mask, Plate and Printed Copy - even in comparison with earlier measurements.



Setup	Cyan	Magenta	Yellow	Black	Summary		
Mask	2%: 1.9	5%: 4.8	10%: 9.7	25%: 24.6	50%: 49.0	75%: 73.8	100%: 100
Plate	2%: 2.0	5%: 3.1	10%: 6.3	25%: 20.7	50%: 40.0	75%: 61.0	100%: 100
Print	2%: 4.9	5%: 9.0	10%: 14.1	25%: 29.4	50%: 56.2	75%: 80.0	100%: 100





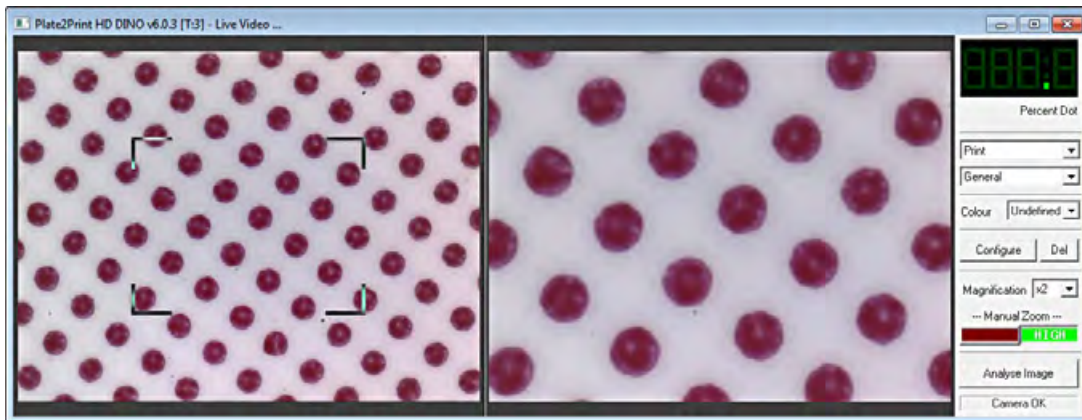
## BENEFITS OF FLEXO PLATE-2-PRINT HD

- ▶ Perfect tool for fingerprinting the press
- ▶ Generates a complete dot gain curve
- ▶ Compares dot sizes on masks, plates and printed copy – all on a single graph
- ▶ Also works on metal backed plate materials (*letter press*)
- ▶ Accurate to 0.3%.
- ▶ Halftone dot measurement: 24 - 240 lpi | 10 - 100 lpcm
- ▶ Screen angle and ruling calculator
- ▶ Save the image for archiving or e-mailing for further analysis



...d easy. Save valuable production time by getting to the bottom of print problems  
 ...plates and printed copy. End the fingerpointing between prepress, platemaking  
 ...o such a portable and easy-to-use solution for solving flexo print problems.

## PRINT READING APPLICATION



**Left view** shows a larger area of the print. This helps to target the desired smaller area indicated by the 4 area markers.

**Right view** shows the enlarged version of the left windows center area, allowing an easier dot shape definition.

### Multi-View-Analysis

(see also back page)

- Global view taken from approximately 10 cm distance for copy analysis
- Low zoom analysis
- High zoom for dot quality analysis

The three zooms ensure all print issues can be captured for analysis and emailed to the respective supplier for fast response and discussion.

### Perfect transmissive readings utilising Troikas LED Backlighter

Troikas LED Backlighter is a specially developed LED-based Backlighter system with transmissive collimated light to achieve optimised contrast when analysing flexoplate dot surfaces – to be used for 2D analysis with the **PLATE-2-PRINT HD** or **ANICAM** with **FLEXOPLATE QC** measuring systems.



### PRODUCT SPECIFICATIONS

FEATURES	
<b>▼ Media</b>	
Masks (Film)	✓
Plates: Best suited to translucent material. For opaque or letter press material AniCAM + FlexoPlate QC is recommended	✓
Printed copy	✓
<b>▼ Dot Evaluation</b>	
Halftone dots: 24 lpi - 240 lpi   10 - 100 lpcm	✓
Numeric %-display   Dynamic graphic display	✓
Screen angle / ruling calculation	✓
Positive / Negative reading	✓
Accuracy better than 1% over full range of readings	✓
Geometric measurements	✓
<b>▼ Value comparison</b>	
Numeric and graphical comparison between plate and print readings	✓
<b>▼ Interface</b>	
High speed USB 2.0 link	✓
<b>▼ Optical Range</b>	
Adjustable from min zoom 7.5 x 5.6 mm to max zoom 500 x 400 µm	✓
<b>▼ Connectivity &amp; Storage</b>	
.jpg, .bmp or .p2p file formats	✓
Direct application interface ( <i>RIPs, spreadsheets, etc</i> )	✓
<b>▼ Light Source</b>	
Polarised white light LED	✓
<b>▼ Options</b>	
LED-Backlighter for optimised transmissive readings	✓

### TECHNICAL SPECIFICATIONS

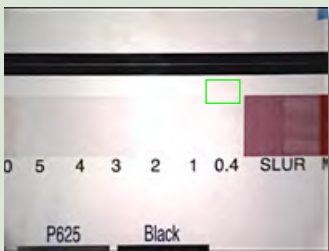
FEATURES	
<b>▼ Electronics</b>	
5 Megapixel RGB camera with 2592 x 1944 pixel resolution	✓
USB Control via PC	✓
Powered via USB – no batteries needed	✓
<b>▼ Dimensions</b>	
Plate-II-Print HD unit: 12 x 5.5 x 5.5 cm ( <i>H x W x D</i> )	✓
Plate-II-Print HD boxed: 7 x 18 x 21 cm ( <i>H x W x D</i> )	✓
<b>▼ Weight</b>	
Plate-II-Print HD unit: 150 g	✓
Plate-II-Print HD boxed: 750 g	✓
<b>▼ Environmental conditions</b>	
Temperature: 16° - 32° C (60° - 90° F)	✓
Humidity: 40% - 60%, non-condensing	✓
<b>▼ Minimum PC-requirements</b>	
From i3, 2.4 GHz, 2 GB RAM, 1024 x 768 screen resolution, 2 x USB2.0 ports, 2+ GB harddisk space	✓
<b>▼ Operating Systems</b>	
Win 7 / Win 8 / Win 10	✓
<b>▼ Warranty</b>	
12 months return to base. Software upgrades FOC for 12 months after purchase.	✓

February 2017 E&OE. – Specifications and details subject to change without notice

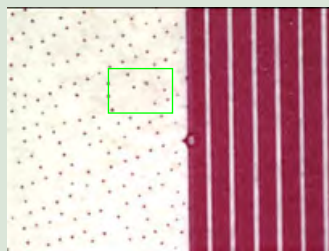
"Troika" is a trademark of Troika Systems Limited

### MULTI-VIEW-ANALYSIS

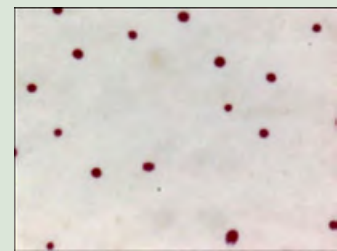
**Global View** (45mm x 40mm)



**Low Zoom** (75mm x 5.5mm)



**High Zoom** (0.85mm x 0.60mm)



1 Blackworth Court  
Blackworth Industrial Estate  
Highworth, Wiltshire, SN6 7NS  
United Kingdom

Tel: +44 (0) 1793-766-355  
Fax: +44 (0) 1793-766-356  
info@troika-systems.com  
www.troika-systems.com

Your authorised Flexo Plate-II-Print HD dealer: